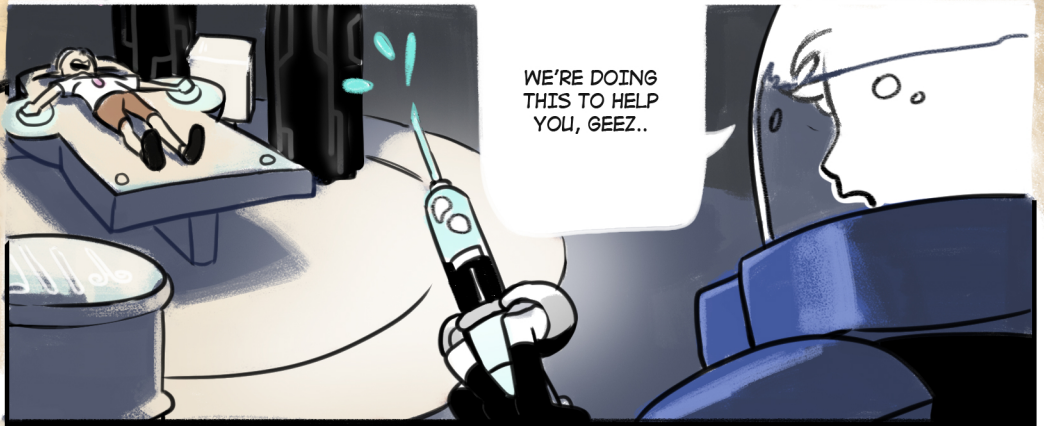


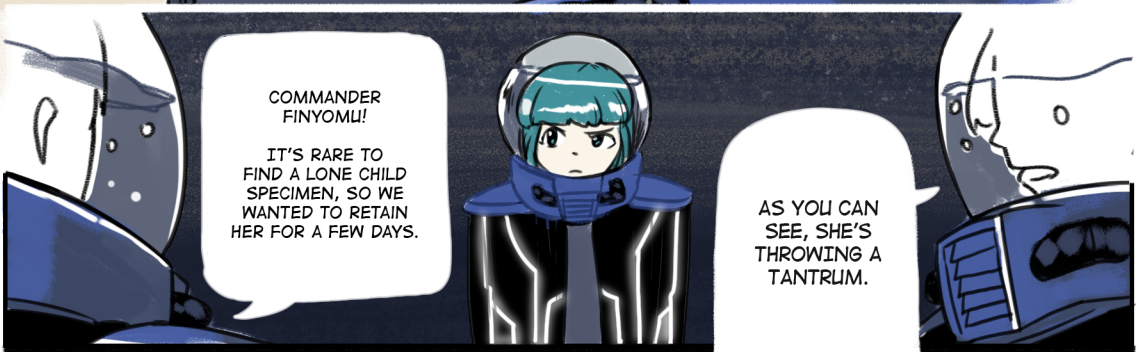
SETTLE  
DOWN!



WE'RE DOING  
THIS TO HELP  
YOU, GEEZ..



WHAT'S  
GOING ON  
HERE?



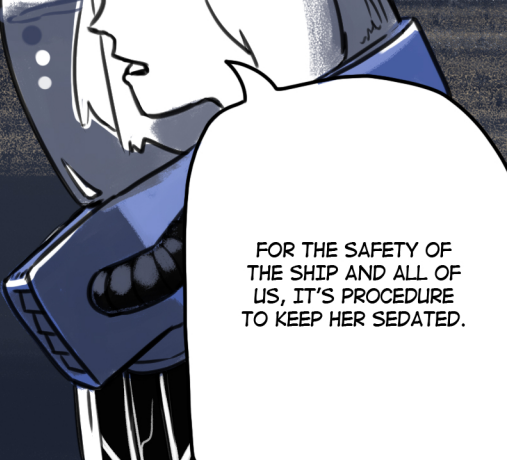
COMMANDER  
FINYOMU!

IT'S RARE TO  
FIND A LONE CHILD  
SPECIMEN, SO WE  
WANTED TO RETAIN  
HER FOR A FEW DAYS.


AS YOU CAN  
SEE, SHE'S  
THROWING A  
TANTRUM.



PUT THAT  
NEEDLE AWAY.  
YOU'RE  
MAKING THIS  
HARD ON HER.



FOR THE SAFETY OF  
THE SHIP AND ALL OF  
US, IT'S PROCEDURE  
TO KEEP HER SEDATED.



HOW WILL THE  
SURFACERS BELIEVE IN  
US IF WE SHOW THEM  
NO TRUST IN RETURN?

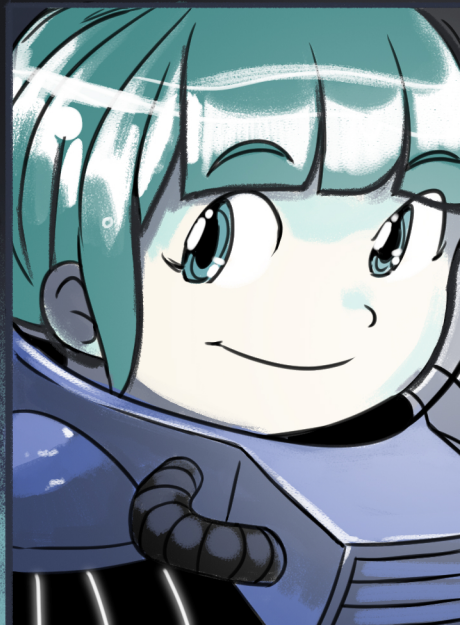
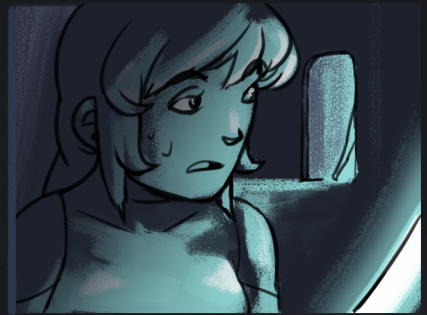
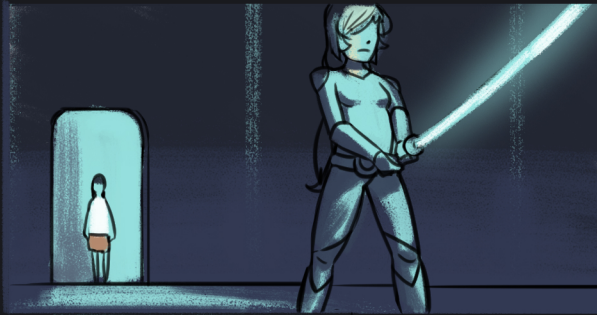
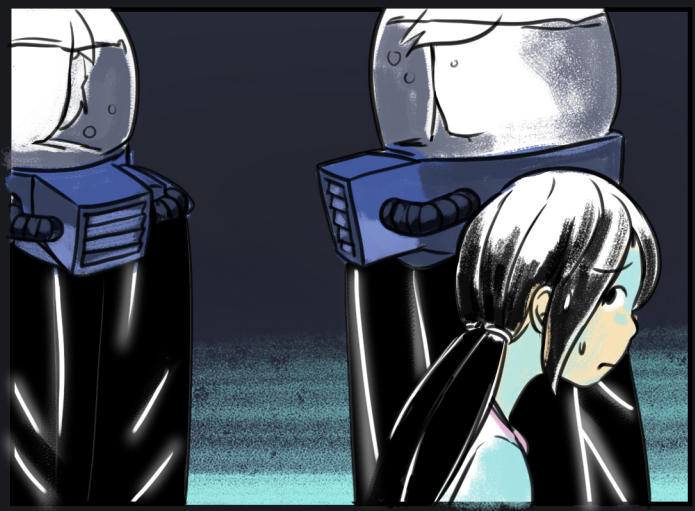
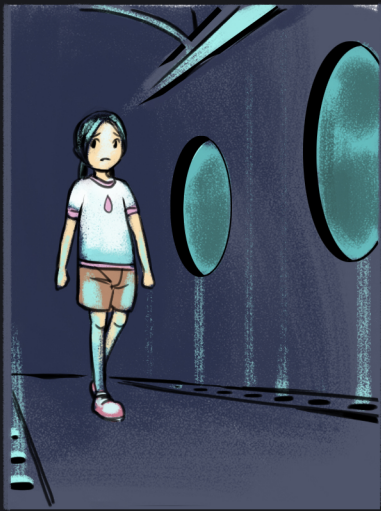


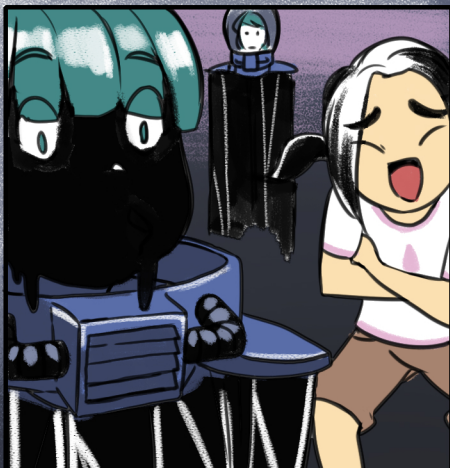
AS YOU WILL,  
COMMANDER.



...











WE'RE SENDING  
YOU HOME,  
SURFACER.

COMMANDER  
FINYOMU IS  
UNAVAILABLE  
TO SEE  
YOU OFF.



THANK YOU  
FOR YOUR  
CO-OPERATION.



THAT'S WHY  
WE SHOULD  
HAVE SEDATED  
HER...



FINYOMU?



YES MUKAN?  
SPEAK YOUR MIND.



...

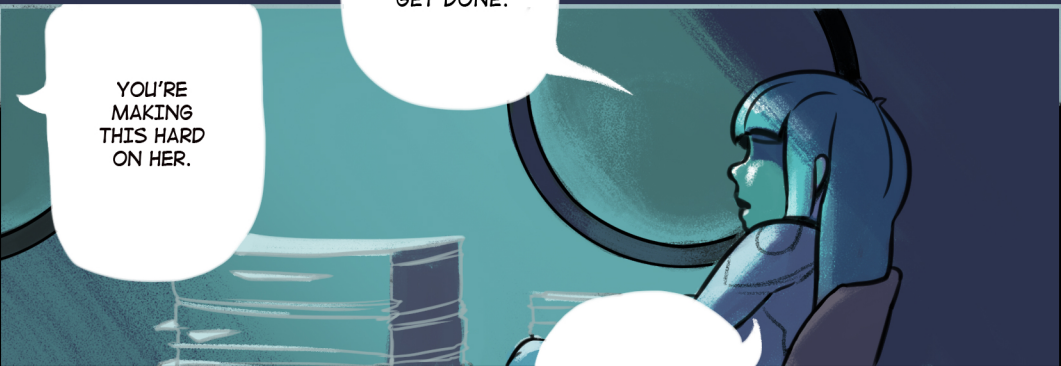
I UNDERSTAND  
IT'S SAD TO SAY  
GOODBYE.

BUT IS THIS  
WHAT YOU  
WANT?

THERE'S  
TOO MUCH  
PAPERWORK TO  
GET DONE.

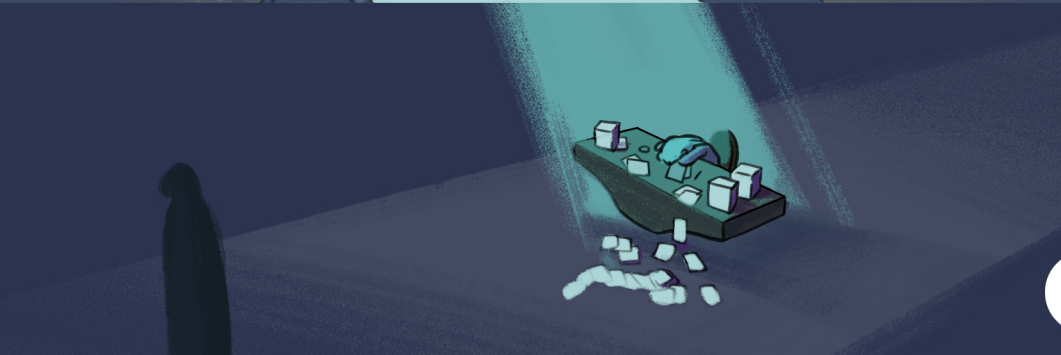
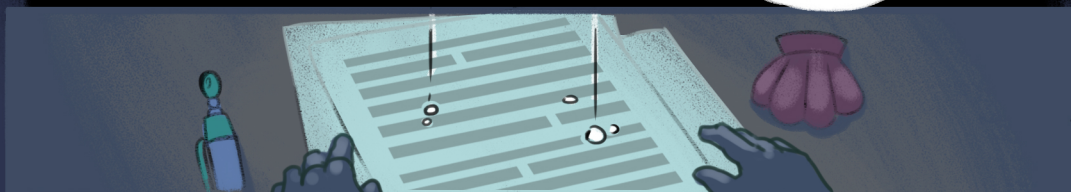
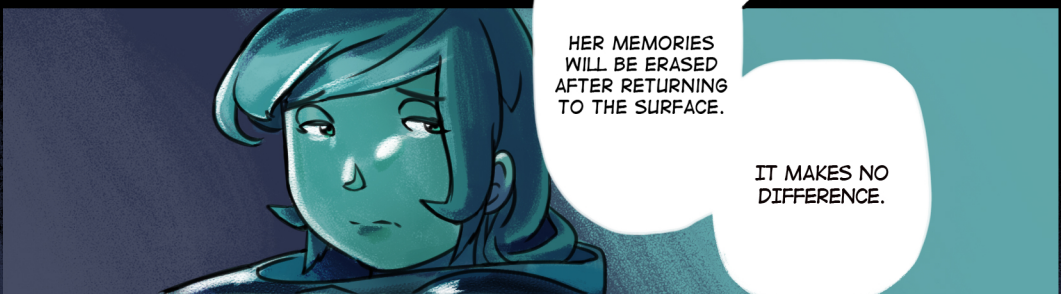


YOU'RE  
MAKING  
THIS HARD  
ON HER.



HER MEMORIES  
WILL BE ERASED  
AFTER RETURNING  
TO THE SURFACE.

IT MAKES NO  
DIFFERENCE.



END